

## Space Data Launches First Commercial Balloon-Borne Wireless Data Network

Space Data Corporation, a company providing wireless data and messaging services in rural and remote areas, has announced the launch of its telemetry service in the Permian Basin region of West Texas. Space Data has designed and deployed the first commercial balloon-borne wireless data network - the SkySite(R) Network - enabling applications such as SCADA and field communications in even the most remote locations.

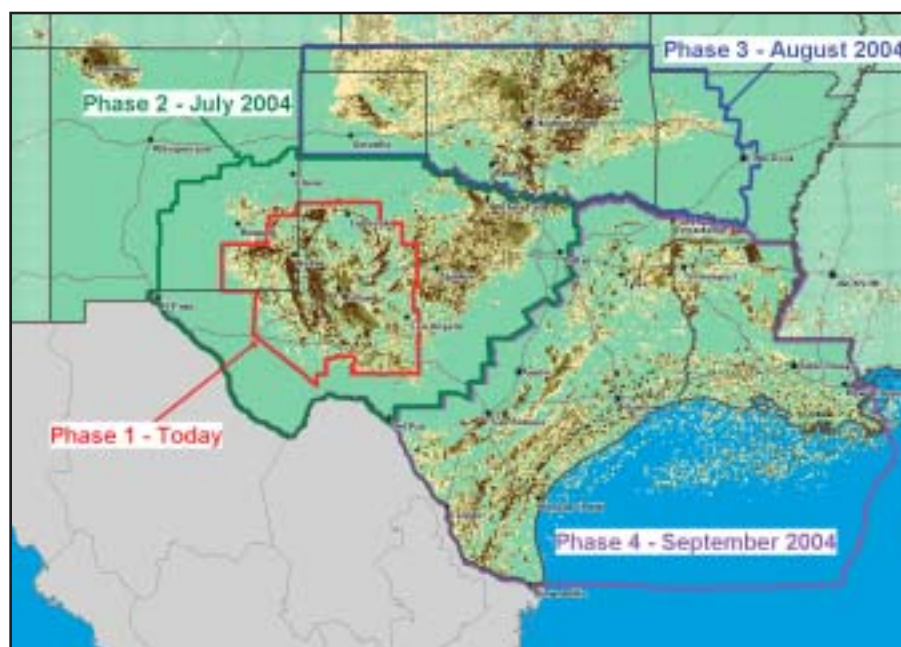
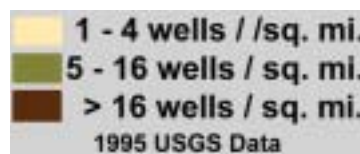
Energy industry customers using automation equipment such as remote telemetry units (RTU) and electronic flow meters (EFM) can establish SCADA connections through SkySite Network by installing a low-power wireless modem at any automation location. Space Data's network utilizes ReFLEX(tm) technology, a proven wireless data standard developed by Motorola to provide high reliability data delivery.

"Energy industry managers are looking for cost effective communications that will allow them to automate more of their sites," said Mark Davis, Space Data's Director of Marketing. "We provide the same coverage ubiquity as satellite systems but at a more affordable price. We also offer an ideal solution for those customers who can't or don't want to own and maintain their own radio infrastructure. For those who do, we can provide the backhaul."

The SkySite Network is unique in its ability to provide reliable, affordable data communications to rural and remote areas. Building on decades of success by weather service organizations around the world that have used balloon-borne systems to gather meteorological data, the company has developed a command and control system that enables the management of a large "constellation" of SkySite Platforms. These SkySite Platforms deliver reliable, digital signals over hundreds of miles. At an altitude of 100,000 feet, a single SkySite Platform can provide telemetry services to an area the size of Oklahoma.

"We've successfully completed a nine-month field test with producers in the oil and gas industry," said Davis. "We're confident that the SkySite Network can meet and exceed the needs of our customers, so the time is right to begin offering them a new alternative for remote wireless coverage."

Service plans are available directly from Space Data. The wireless modem used to connect to the SkySite network is available from select Space Data resellers. Customers gain access to their data using a fixed IP address and will be able access site-specific information via the Space Data Web site. Space Data offers customer support five days a week and technical support on a 24x7 basis. Visit [www.spacedata.net](http://www.spacedata.net).



### Iridium Satellite Fax Service

Iridium Satellite LLC has announced the launch of a new satellite fax service that will permit subscribers to send and receive faxes from any location in the world directly to and from any standard fax machine, as well as connect WiFi networks to Iridium. The Iridium fax service supports inbound and outbound faxes through the uniHub™ interface, which has been developed by On-Go, Inc. of Bethesda, Maryland, USA. UniHub is a plug-and-play solution that extends the functionality of Iridium satellite phones, to include fax and other data services such as WiFi integration. For inbound and outbound faxes, the Iridium phone is connected via uniHub to any standard fax machine or fax modem. Call setup and routing are totally automatic and transparent to the user. Fax calls are routed through Iridium's global constellation of 66 orbiting satellites. In addition, uniHub includes a broad array of data capabilities such as allowing to receive text-based emails through their Iridium phone and an attached fax machine, as well as bundling data from onboard devices such as a ship's GPS receiver and transmitting it via email to a shoreside Internet destination for ship tracking and asset management solutions. With the addition of the uniHub offering, Iridium further extends its strong suite of services for customers around the globe. In industries where fax and data services are critical, such as commercial fishing, mining and oil and gas exploration, the ability to seamlessly connect a standard fax machine over the Iridium network ensures that customers will be better able to perform their business regardless of the inhospitable and remote environments in which they find themselves.

### CapRock Forms Brazilian Holding Company, Acquires Blue Sky Comunicações

Shortly after delivering increased satellite communications coverage in the Asia-Pacific region, CapRock Communications continues its global expansion by extending its presence in South America. Through the formation of a holding company, CapRock Holdings do Brasil Participações Ltda., and

the subsequent acquisition of Blue Sky Comunicações do Brasil Ltda., CapRock has obtained a Brazilian commercial license to provide an extensive suite of satellite telecommunication services in Brazil. South America and the South Atlantic region also will be included in the service area.

"Extending service in South America is the next step in our global expansion," said CapRock CEO Peter Shaper. "The formation of our holding company and the acquisition of Blue Sky allows us to meet client requests for service presence in that region. Our customers there now can benefit from the reliable satellite communications services made possible through CapRock's IPxpress(tm) network and extensive experience providing communications to remote locations around the globe."

CapRock has been executing on its initiative to expand its communications services to the harshest and most remote parts of the world. In the last year, the company has expanded service and increased access to technology for the Asia-Pacific region, the Middle East and Africa. Now, with this move into Brazil, CapRock increases its service America and delivers on its commitment to boost service levels to customers in all parts of the world.

In addition, CapRock and ViaSat Inc. (Nasdaq:VSAT) have formed a global alliance that supports CapRock's continuing initiative to supply its customers with reliable, flexible and feature-rich satellite communications services. In addition, CapRock now serves as the exclusive oil and gas industry partner to ViaSat's VSAT Networks division. The alliance enables ViaSat to leverage CapRock's global network, reputation for reliability and industry relationships. The alliance with ViaSat enables CapRock to focus on its core competency of delivering reliable, advanced satellite communications service to the harshest and most remote locations in the world. ViaSat is supplying and supporting communications equipment for CapRock's customers around the globe. CapRock has grown its coverage during capabilities of its CapRock IPxpress™ network in Africa, the Asia-Pacific region and South America.



**Torch Offshore, Inc.**  
401 Whitney Avenue, Suite 400  
Gretna, LA 70056 - USA  
(504) 367-7030, F (504) 367-7075  
[www.torchinc.com](http://www.torchinc.com)



## Subsea Construction and Installation

## Industry Leader in Shallow Water

## Innovative Approach to Deep Water



Visit us at OTC Booth #5455